

Rethinking the enduring

Introduction:

The thought – impulse for rethink the way we build came when my teacher gave me the task of thinking about how building might change in the future in view of future pandemics.

After reflection, the word **possibilities** came to my mind. It is the possibilities that enable us to change or develop things. The Bauhaus gave us a way of building and designing that should be all the more presenter today.

My results are based on a neighbourhood from my hometown (Cologne Chorweiler). I have tried to design a building part that can bridge the situation of today and the future.



Source of the deposited images: Kölner Stadtanzeiger stand 31.05.2021

Inspiration:

The idea of upgrading prefabricated buildings to give people more space and attention comes from architects in Paris (Lacaton & Vassal).

With this in mind, I have thought about how i can transport these approaches even more into the future.



The design in view of Bauhaus, durability and demography:

The Bauhaus has always combined unlimited usability with unmistakable aesthetics and design.

The many details are intended to show a building part that respects the basic features of shape and craftsmanship.

The following numbers and descriptions refer to the attached drawing.

① Sliding elements made of polycarbonate sheets:

The sliding elements are intended to take the monotony out of the building. Polycarbonate is translucent and very durable.

② A terrace to meet and plant:

A roof terrace has many advantages. It not only creates space for togetherness but also for the preservation of plants.

③ The possibility of extending a residential unit by one storey:

The expansion of housing units is becoming more and more important, flat buildings will have to accommodate more and more people, and in most cases the existing flats are too small.

④ The entrance of the existing is visible:

The visible preserved entrance is to demonstrate that it is still a well-known place, a place that reflects the history of the building and its people.

⑤ The possibility of establishing further entrance:

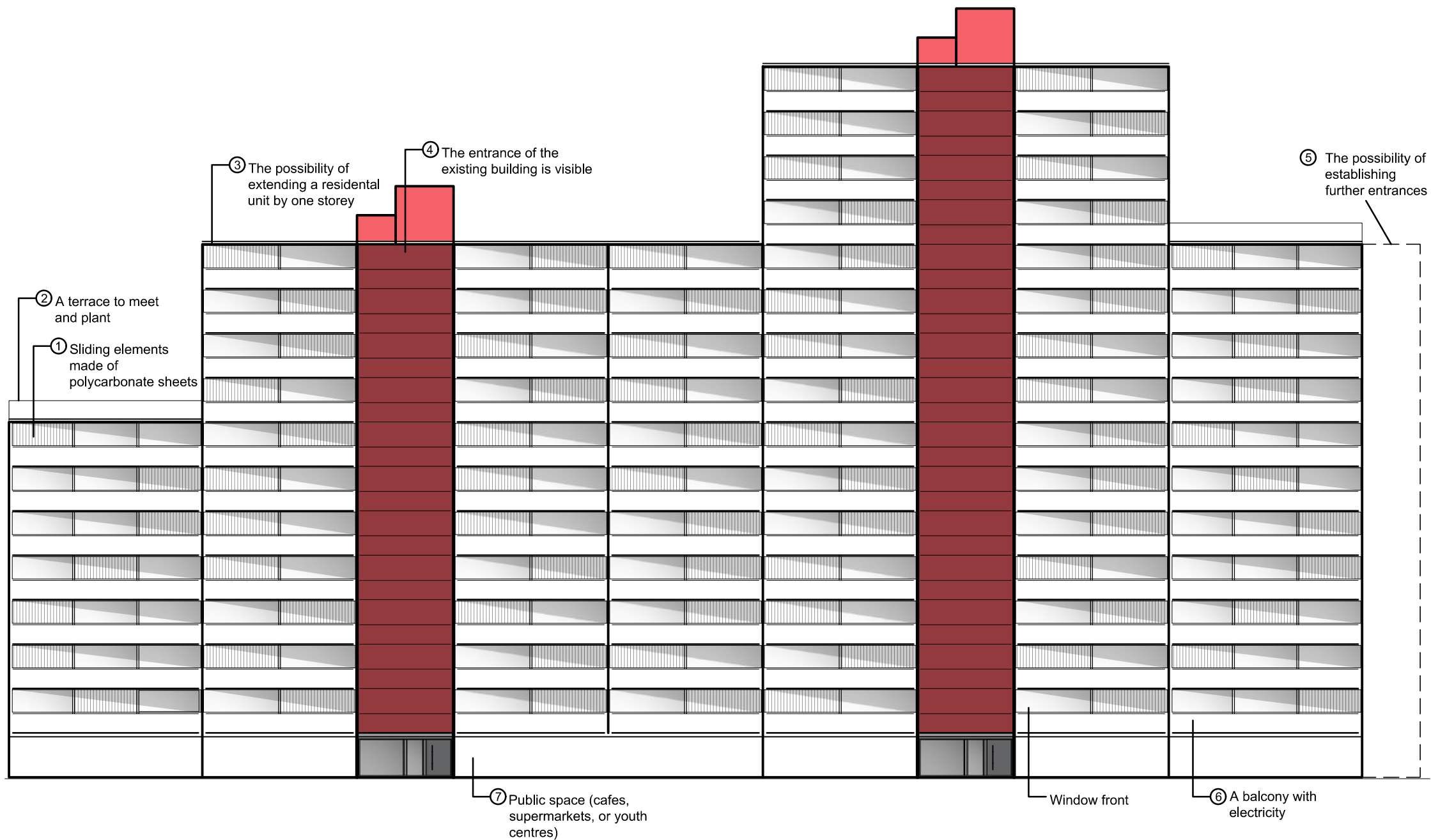
More access to the flats offers the possibility to avoid more people during pandemics.

⑥ A balcony with electricity:

A balcony should offer a lot, so that it is not used as an exit but as an outdoor space. It could, for example, be used as an office in summer.

⑦ Public space:

Public space creates a community and connects life in a neighbourhood.



Street view

Name:	Date:	Sheet:
Marie Wegmann	31.05.2021	DIN A4 crosswise