



## NEB Conversation

The housing of the future will be  
in the village - Developing a  
Smålandian village

Date: 30 June 2021

Place: Digital webinar



## Participants

Jennie Bengtsson

Gunilla Kronvall

Fredrik Lindblad

Eva Haraldsson

Johan Blixt

Anders Borgehed

Christel Gustafsson

Heidi Vassi

Nur Akgun

Matilda Tham

Kristina Bornholm

Kirsi Jarnerö

Jönköping County Administrative Board,  
Rural Development

Form/Design Center Malmö

Växjö municipality, Business, Linnaeus University,  
School of Business and Economics

Arkitektbolaget, Linnaeus University, Building  
technology

Vida AB

Chamber of Commerce and Industry of Southern  
Sweden

Region Kronoberg, Regional development

Kronoberg Jönköping County Administrative Board,  
Cultural environment

Region Kronoberg, Regional development

Linnaeus University, Design

Arkitektbolaget

Smart Housing Småland

## Conversation facilitators

Anna Zingmark

Karoline Bottheim

Länka Consulting AB

Länka Consulting AB

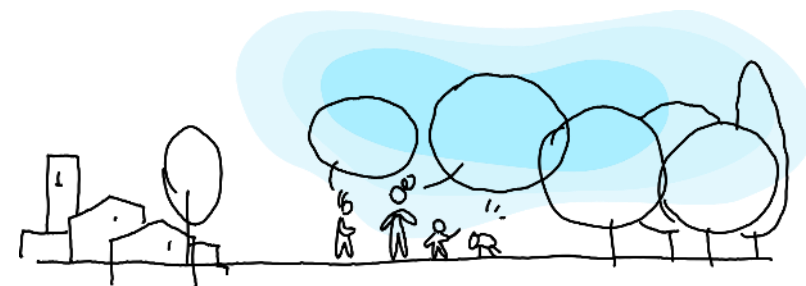
## Conversation hosts

Kristina Bornholm

Kirsi Jarnerö

Arkitektbolaget

Smart Housing  
Småland



# Conclusions from conversation

## What will be important to address to develop beautiful, sustainable, and inclusive places beyond the city?

### Inclusion

Service is not always available. Rural areas need to be inclusive, which requires joint efforts to create the conditions for quality housing. On the countryside you need to be prepared to sacrifice the needs of modern life, but it is also a prerequisite for a future sustainable society. In the future everyone has to sacrifice the needs of modern life, regardless of where you live in the countryside or in the city.

### Aesthetics

In order to provide the right conditions for the development of a rural area, the residents need to be involved more clearly like they are in the planning of an urban space. To create pleasant cohesive countryside settings dare to be tougher in terms of demands on design and aesthetics. Take into consideration the conditions and benefits of the place.

### Sustainability

Developments on the countryside need to be varied to be interesting for as many as possible. Rural areas must be developed in new way, which includes the residents and enables the feel of a place where personal development is possible in a similar way as in the city.

Rural development needs to be economically sustainable to succeed. Confidence in success is needed, which requires the prerequisites for developing good examples that can be presented and disseminated. Proximity and communications to other places that provides added value such as culture and sport is needed.



# Conclusions from conversation

## Continued work

The understanding of cooperation and collaboration between municipalities, regions, business and academia is important, as is continuity. Dialogue with the residents is a prerequisite for development.

## More information

- <https://arkitektbolaget.se/projekt/define-refine/>
- <https://www.formdesigncenter.com/utstallningar/define-refine/>
- [Define/Refine – utställning om kritisk regionalism - Smart Housing Småland](#)