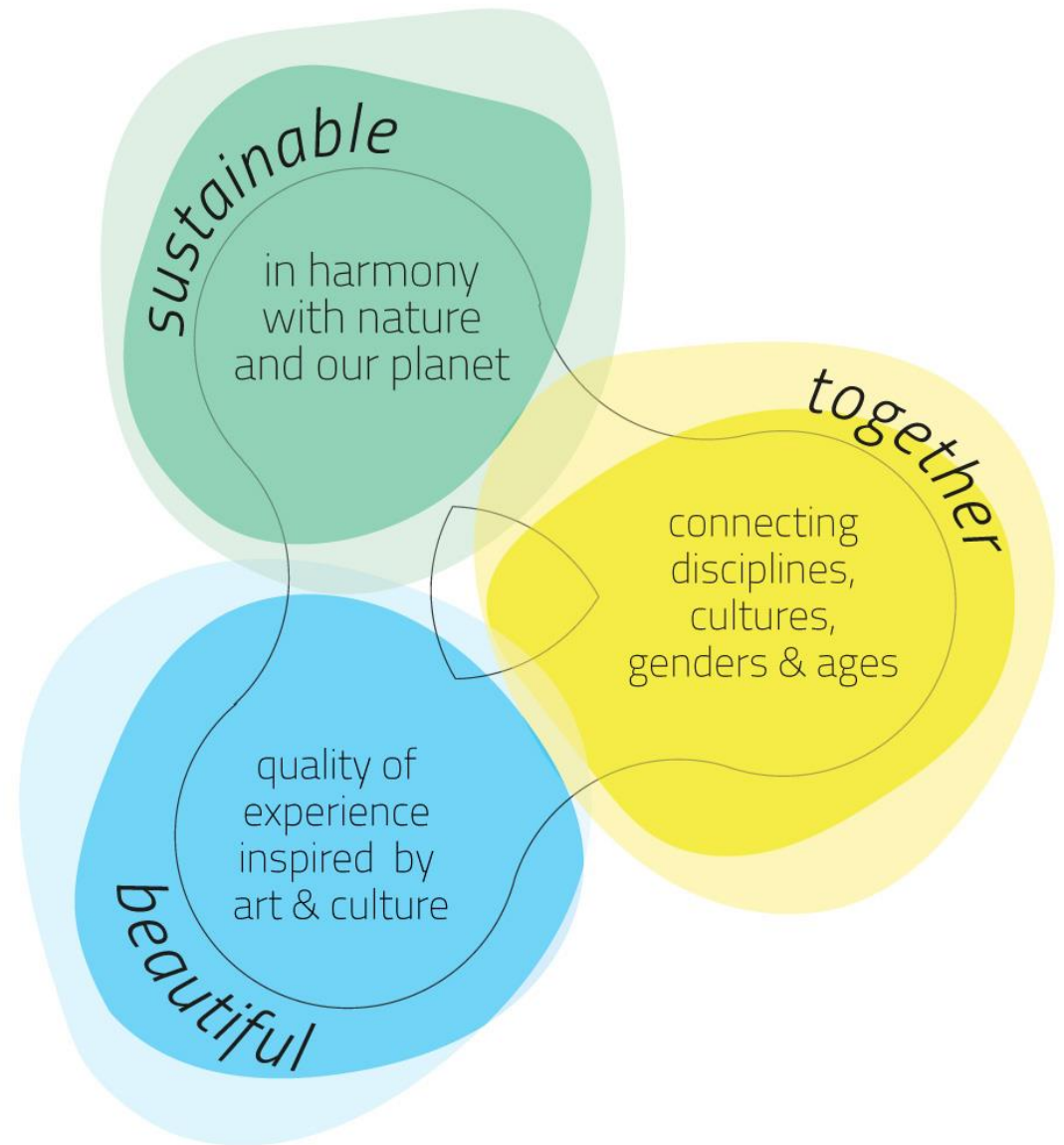


ROADMAP ON THE NEW EUROPEAN BAUHAUS FACILITY

Vera Winthagen, Elisa Grafulla Garrido, Emilie Vandam, Solène Gautron, Sophia Vlieger de Oliveira

JRC.B4 - New European Bauhaus
Directorate-General Joint Research Centre,
European Commission

11 April 2025



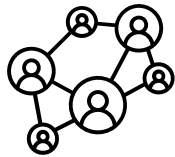
NEB Facility: Revitalise European Neighbourhoods with Design for Sustainability and Inclusion

Objective ①

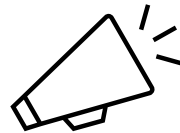
Transforming Places with Communities

R&I Component:
**Develops novel
NEB solutions**

Funding approximately **EUR 120 Million/year**



Engagement



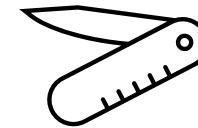
Communication

Objective ②

Supporting Innovation

Roll-out component:
**Implements and scales up
NEB solutions**

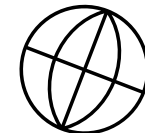
Funding mixed sources (EU, private and national funds), ambition: **EUR 120 Million/year**



Tools

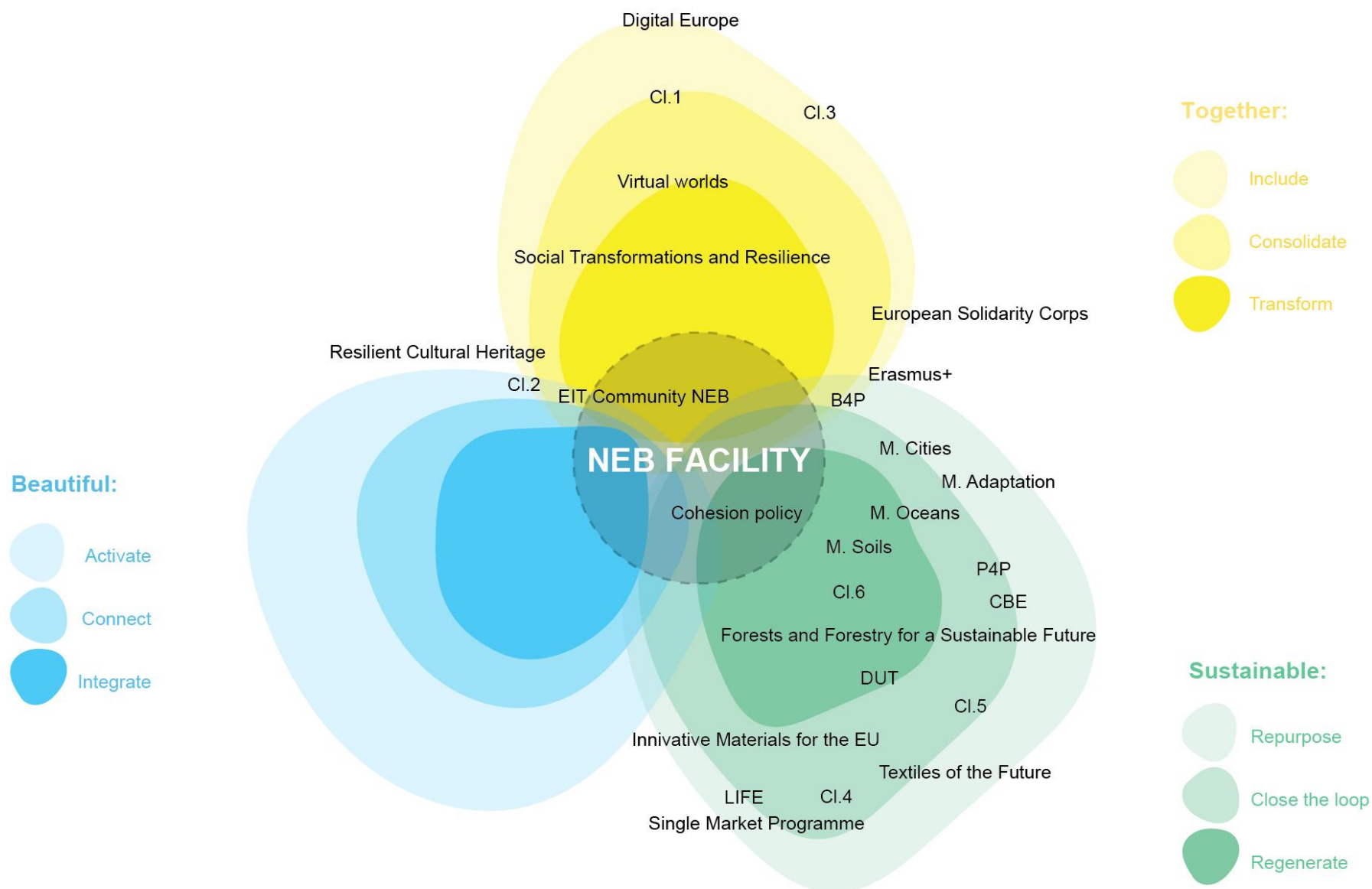
Objective ③

Enabling Change



International Dimension

NEB Facility and other EU initiatives and programmes



NEB Facility: Governance

European Commission for Political steering

Strategic decisions

Advisory
Expert
Group

R&I component:

Strategic configuration of
Horizon Europe Programme
Committee

Roll-out component:

- Comitology of EU programmes supporting the NEB
- Managing Authorities for shared management

Implementation

JRC (coordination) + NEB core DGs + ISWG

National Contact Points (NCPs)

Objective 1: Transforming Places with Communities

R&I

Connect the green transformation with social inclusion and local democracy

by **exploring the drivers** for citizens to lead the green transformation of their neighbourhoods

Roll-out

Foster sustainable living and community empowerment

by **deploying** and **scaling up** NEB solutions for the social and physical transformation of neighbourhoods

R&I towards objective 1

Transforming Places with Communities:
Connect the Green Transformation with
Social Inclusion and Local Democracy

1. Supporting innovation through the **social and cultural impacts** of the **built environment**
2. The transformative potential of **participatory practices and governance models**, and their links with local and cultural specificities
3. **Ownership and acceptability of change**, and the role of **arts, culture and cultural heritage** in them
4. **Social connections, sense of belonging** and **local democracy**, including through **culture**

2025

Horizon Europe Work Programme 2025

Tentative: pre-publication
before the end of April 2025.

Information session on the
topics (calls), subject to and
after formal adoption.

2026-2027

Horizon Europe Work Programme 2026-2027

Preparation is ongoing

Expected adoption by the end
of 2025

Roll-out towards objective 1

Transforming Places with Communities:
Foster Sustainable Living and
Community Empowerment

1. Implement **beautiful, sustainable, and affordable housing**
2. Deploy **regenerative strategies** for green and public spaces
3. Implement stronger mechanisms for **local democracy** and **neighbourhood services**
4. Support **culture** and **creation** as languages of **change**

2025

NEB prizes 2025: 'NEB Affordable Housing' prizes

NEB boost for small municipalities

REGIO **Peer2Peer NEB Community**

EIT Community NEB

2026-2027

Possible **calls** under Single Market Programme

NEB prizes 2026&2027

NEB boost for small municipalities

New NEB calls under ERDF programmes

① Transforming Places with Communities

Mainstreaming of NEB values – All Member States committed to implement the NEB in at least one of their ERDF programmes

THRIVE – Town Centre First Heritage Revival Scheme, Ireland

Initiative from the Irish Government to embed the values of the NEB in national policy, towards the **adaptation of heritage buildings** and the revitalization of town centers

EUR 120 Million combining national funds and European Regional Development Fund (ERDF)



Objective 2: Supporting Innovation

R&I

Circular and regenerative approaches to the built environment

by **rethinking** how we design, build and use our surrounding spaces and **exploring** new technologies and construction methods, materials and products that are more sustainable and circular

Roll-out

Circular and regenerative approaches to the built environment

by **scaling up** a new circular economy of construction

R&I towards objective 2

Supporting Innovation:
Circular and Regenerative Approaches for the
Built Environment

1. **Materials** and **products**
2. **Innovative, sustainable and circular** designs and solutions for revitalised neighbourhoods
3. Assessing the performance and impact: **metrics and evidence**

2025

Horizon Europe Work Programme 2025

Tentative: pre-publication
before the end of April 2025.

Information session on the
topics (calls), subject to and
after formal adoption.

2026-2027

Horizon Europe Work Programme 2026-2027

Preparation is ongoing

Expected adoption by the
end of 2025

Roll-out towards objective 2

Supporting Innovation:
Circular and Regenerative Approaches for the
Built Environment

1. Support a **new construction culture**, testing how off-site processes can foster co-design
2. Boost the **scale-up and market uptake** of **innovative construction materials** and products
3. Deploy **NEB solutions for a circular economy of construction**

2025

EIT Community NEB

Architectural Sufficiency
and Adaptability

2026-2027

Possible **calls** under the
Single Market Programme

Possible EIC **Accelerator
Challenge**

Possible **calls** under **LIFE**

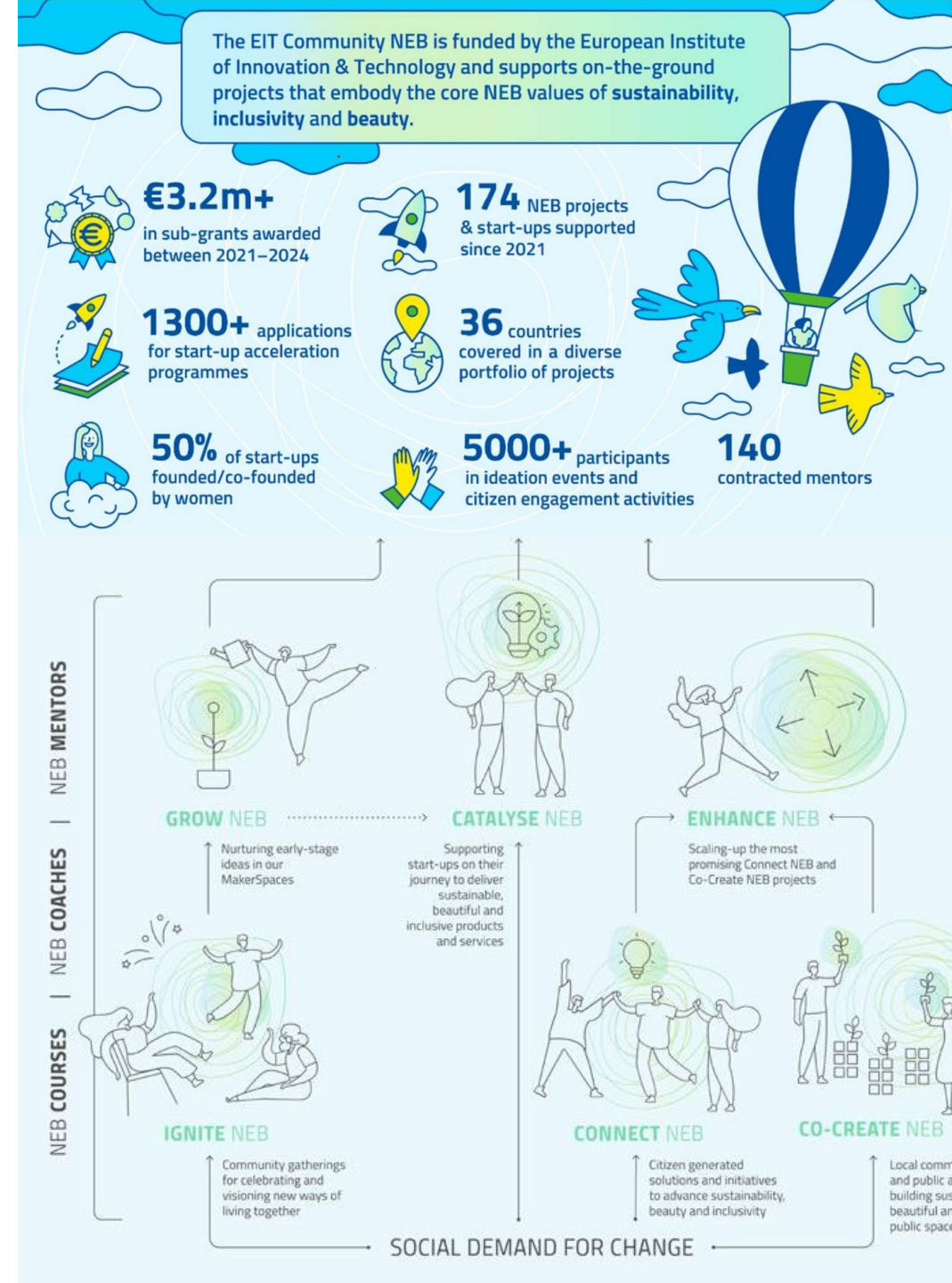
② Supporting Innovation

*European Institute of Innovation and Technology
(EIT) Community NEB Journey, an Innovation Funnel*

Seven interlinked activities from ideation to entrepreneurship, citizen engagement, and mentorship support;

Created to turn social, economic and environmental needs into **projects, products and services** validated by codesign with communities throughout all the phases of the process;

Actors can enter at any stage in the journey and develop and scale-up their project through it;



Objective 3: Enabling Change

R&I

Innovative funding and new business models for the transformation of neighbourhoods

that demonstrate the economic, financial, social, cultural, and environmental viability and attractiveness of NEB solutions.

Roll-out

Skills, models and tools to support NEB change-makers

Supporting the enabling conditions for the deployment of innovative NEB solutions

R&I towards objective 3

Enabling Change: Innovative funding and new business models for the transformation of neighbourhoods

1. **New business models** to support the revitalisation of neighbourhoods
2. **Innovative supply chains** and **systems for circularity** in neighbourhoods
3. **Neighbourhood ecosystem barriers** and **drivers** for NEB projects
4. Innovative **funding models**

2025

Horizon Europe Work Programme 2025

Tentative: pre-publication before the end of April 2025.

Information session on the topics (calls), subject to and after formal adoption.

2026-2027

Horizon Europe Work Programme 2026-2027

Preparation is ongoing

Expected adoption by the end of 2025

Roll-out towards objective 3

Enabling Change: Skills, Models and Tools to Support NEB Change-Makers

1. Boost **skills** for sustainable construction
2. Implement **innovative funding** and business **models**
3. Implement **digital tools**, including through technical assistance **for local governments**
4. Deploy **capacity-building** for NEB solutions

2025

NEB Academy

ERDF-affordable housing
financial instrument

ERDF-NEB financial
instrument

Invest EU – NEB

EUI capacity building
activities

2026-2027

NEB Academy

Possible **calls** under the
Single Market Programme

Innovative Funding Hub

Possible **calls** under **Digital Europe**

3 Enabling Change

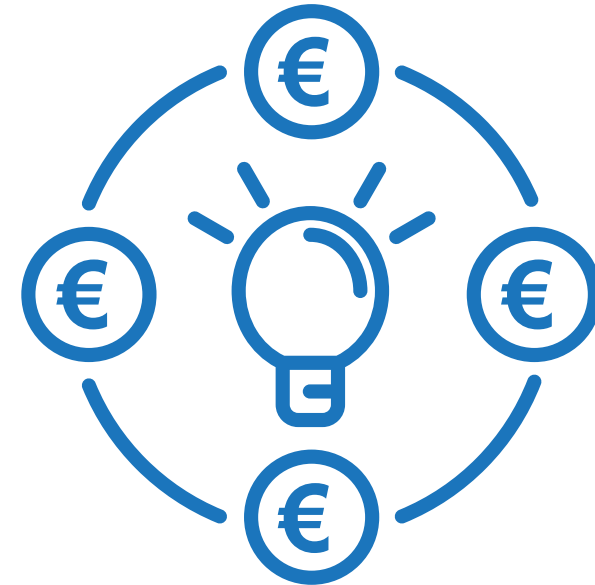
Innovative Funding Advisory Hub

*Pilot Project proposed by the European Parliament
"Stimulating Local and Regional New European Bauhaus
Grassroots Projects"*

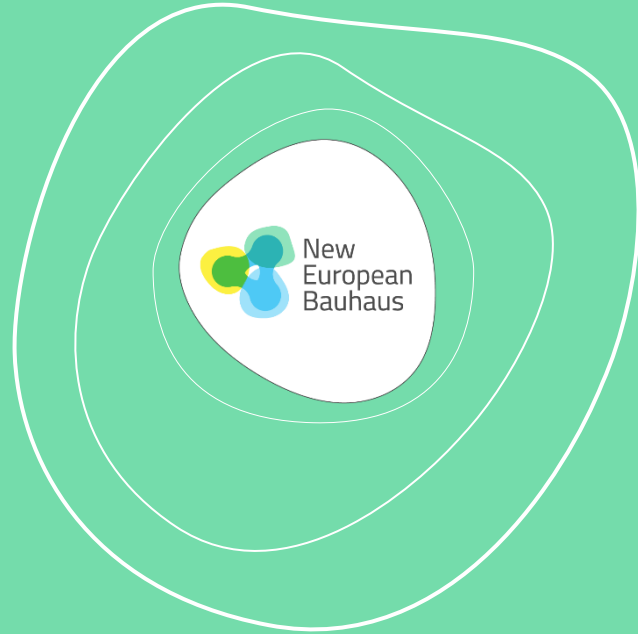
An interactive **IT platform** that facilitates funding to small NEB projects

NEB projects in the built environment under 100,000 euros

Matching small NEB projects with alternative forms of fund such as philanthropist, impact financiers, crowdfunding, blending models



Thank you !



#NewEuropeanBauhaus

- **Web:** <https://europa.eu/new-european-bauhaus>
- **Instagram:** @neweuropeanbauhaus
- **Newsletter:**
https://europa.eu/new-european-bauhaus/stay-touch/e-zine_en